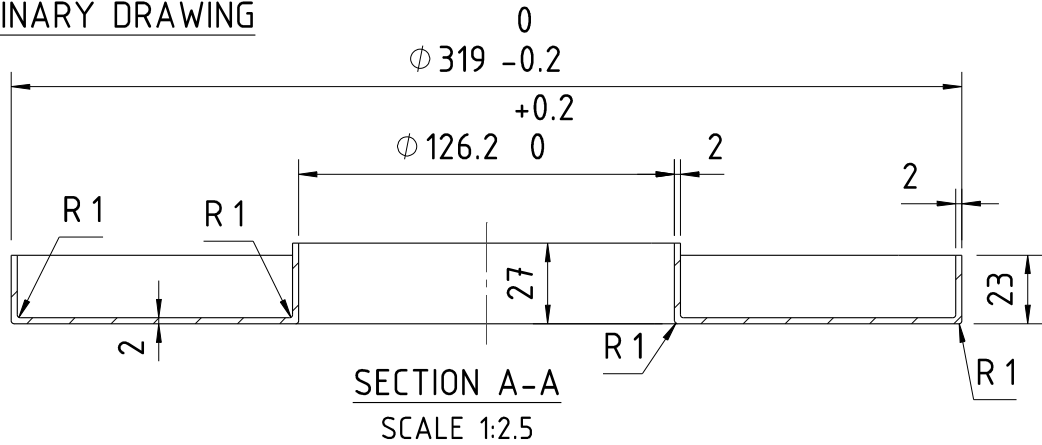


| | | | | | | | | | | | | | | |
|-----------|-------|--------|-------|------|-----|-----|-----|-----|-----|-----|-----|------|-----|-----|
| GRADE No. | VALUE | SYMBOL | N1 | N2 | N3 | N4 | N5 | N6 | N7 | N8 | N9 | N10 | N11 | N12 |
| | | | 0.025 | 0.05 | 0.1 | 0.2 | 0.4 | 0.8 | 1.6 | 3.2 | 6.3 | 12.5 | 25 | 50 |
| SURFACE | | | | | | | | | | | | | | |
| ROUGHNESS | | | | | | | | | | | | | | |

| | | | | | | | | | | |
|--|-----------|-------|--------|----------|-----------|----------|---|-----------|------------|----|
| MACHINING DEVIATIONS FOR LINEAR DIMENSIONS | RANGE | 0 – 6 | 6 – 30 | 30 – 120 | 120 – 315 | 315-1000 | 1000-2000 | 2000-4000 | ABOVE 4000 | RA |
| | TOLERANCE | ±0.1 | ±0.2 | ±0.3 | ±0.5 | ±0.8 | ±1.2 | ±2 | ±3 | ~ |
| FOR DIMENSIONAL TOLERANCES OF SHEET METAL PARTS AND WELDED STRUCTURES, REFER STD. RD-227 | | | | | | | | | | |
| UNSPECIFIED TOLERANCE FOR LINEAR AND ANGULAR DIMENSIONS REF. IS 2102 (PT-1) (MEDIUM) | | | | | | | QUALITY OF WELD JOINTS REF, RD 230 MEDIUM | | | |
| VALUES OF SURFACE TEXTURE SHALL BE AS PER COMPANY STD DS. 1012.C. | | | | | | STATUS: | PROTO | | | |
| WELDING SHALL BE CARRIED OUT AS PER IS: 9595-96 | | | | | | | | | | |

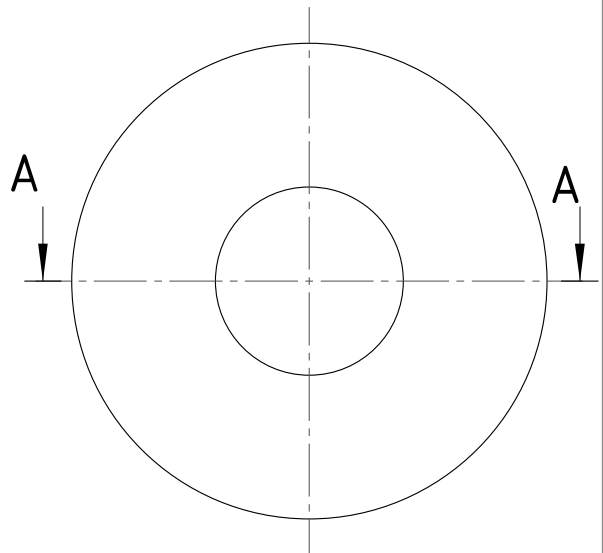


PRELIMINARY DRAWING



NOTE:

1. TENSILE STRENGTH OF MIN. 25 MPa AS PER ASTM D638 (Type 1- 50mm/min)
2. IMPACT STRENGTH OF MIN. 170 J/m AS PER ASTM D256(Method A)
3. HARDNESS OF MIN D65 SHORE AS PER ASTM D2240-05
4. FLEXURAL PROPERTY IF MIN 1125 MPa AS PER ASTM D790 (Procedure A)
5. DEFLECTION TEMPERATURE OF MIN. 85°C AS PER ASTM D648-07
6. DENSITY OF 0.9 TO 0.96 g/cm³
7. INSULATION RESISTANCE OF MIN. 1000 MΩ AS PER ASTM D257
8. THE PARAMETERS WILL BE FINALIZED IN THE DETAIL DESIGN STAGE
9. THE COMPONENT SHALL COMPLY FIRE SAFETY REQUIREMENT EN 45545 HL3
10. INSULATOR SEAT SHALL BEAR COMPRESSIVE LOAD OF 84 kN



| SL.No. | QTY | PART / STOCK No. | DESCRIPTION | SIZE | COMPANY STD./I.S | Wt. (Kg) |
|----------------------------------|-----|------------------|-------------|------|------------------|----------|
| MATERIAL | | | | | | |
| MUMBAI METRO CARS L2 & L7 | | | | | | |
| POLYPROPYLENE/POLYETHYLENE | | | | | | |
| HEAT TREAT. SURFACE TREAT. TITLE | | | | | | |
| INSULATOR SEAT | | | | | | |
| SCALE 1:5 | | | | | | |
| SHEET 1 OF 1 | | | | | | |
| Wt. 0.20Kg | | | | | | |
| DRG No. 525-81120 | | | | | | |
| ALT 3 | | | | | | |

| | | | | | | |
|-----------------------------------|------------|-----|-----|----|----------------------------------|----------------------------|
| ECN: 52510232 | 16-07-2020 | VSE | RSS | MS | PRODUCT | MUMBAI METRO CARS L2 & L7 |
| MATERIAL CHANGED | | | | | REF DRG | |
| ECN: 52510159 | 16-03-2020 | VSE | RSS | MS | MATERIAL | POLYPROPYLENE/POLYETHYLENE |
| REVISED AND REDAWN | | | | | HEAT TREAT. SURFACE TREAT. TITLE | |
| ECN: 52510123 | 10-02-2020 | VSE | RSS | MS | INSULATOR SEAT | |
| PRELIMINARY DRAWING COMMENT ADDED | | | | | SCALE | 1:5 |
| | | | | | SHEET | 1 OF 1 |
| | | | | | Wt. | 0.20Kg |
| | | | | | DRG No. | 525-81120 |
| | | | | | ALT | 3 |

| | | | | | | |
|---------|----------------|------|----|------|------|----|
| ALT.NO. | ECN NO/CHANGES | DATE | BY | CHKD | APPD | MS |
| | | | | | | |

| | |
|--------------|---------------------------|
| BEML LIMITED | NEW FRONTIERS. NEW DREAMS |
|--------------|---------------------------|